

Aluminium-Ex Enclosures MBA-Ex empty

Empty enclosures with component certificate  
Protection class IP 66



**MULTI-BOX Aluminium-Ex empty enclosures** are conform to all installation field requirements where explosive concentrations of gases and dusts can appear - zones 1 and 2 as well as 21 and 22. MBA-Ex empty certified enclosures have a component certificate proving the constructional safety of the component enclosure. Therefore the registration and re-testing of the new product is considerably simplified, due to the already approved enclosure construction. MBA-Ex empty enclosures have a U certification and therefore, after the installation of approved electrical components into the enclosure, the complete unit needs to be retested with temperature characteristics included.

INFORMATION

- ▶ Test report no. : IB-14-3-007 according to ATEX for zones 1 and 2as well as 21 and 22
- ▶ EC-Prototype Examination Certificate IBExU 10 ATEX 1158U according to directive 2014/34/EU
- ▶ Certificate No. IEC: IECEX IBE 14.0020U
- ▶ Continuous operation temperature from -55°C up to +135°C
- ▶ Protection class IP 66 according to EN 60529
- ▶ Examinations and standards EN60079-0, EN60079-7 and EN60079-31
- ▶ Cover screws with captive function made of stainless steel
- ▶ Silicone lid seal glued as o-ring
- ▶ External earthing connection from 2,5 mm² up to 120 mm²
- ▶ Earthing connection points inside
- ▶ Type plate on the inner side of the lid marked with a «U» standing for incomplete equipment
- ▶ Markings Ex II 2G Exe II C Gb and Ex II 2D Ex tb III C Db
- ▶ Powder-coating in colour silver-grey similar to RAL 7001



▶ PDF DXF 3D

MBA-Ex

ACCESSORIES ON DEMAND

- ▶ Mounting plates made of galvanised metal sheet
- ▶ Wall mounting brackets made of stainless steel
- ▶ External hinges made of aluminium
- ▶ Earthing busbars and earthing bolts
- ▶ Ex-tested cable glands and sealing plugs made of stainless steel, brass or polyamide

PROCESSING ON DEMAND

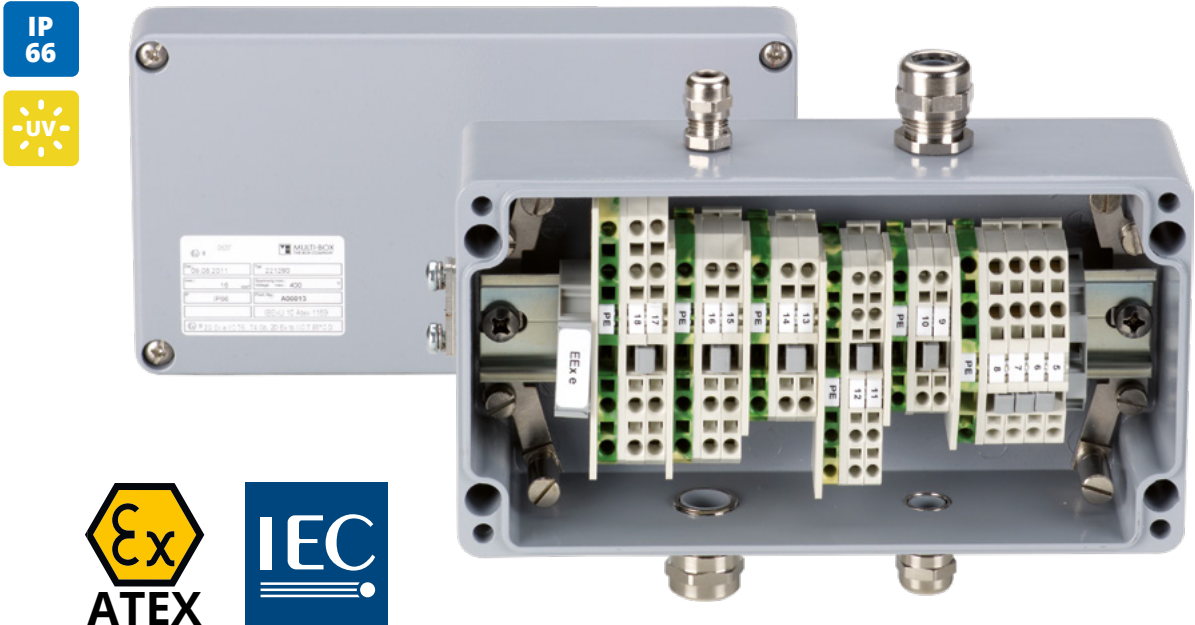
- ▶ All metric threads, PG threads and special threads (with a minimum distance of 2-5 mm to the sealing edge)
- ▶ Pass drillings, cavities and millings (with a minimum distance of 2-5 mm to the sealing edge)
- ▶ Recesses and millings for inspection windows in the enclosure lid
- ▶ Deepening and recesses for foils and film keypads
- ▶ Special colours and markings in silk-screen or pad printing

Article number	Type	L	W	H	TS	M	WL	GA
		mm	mm	mm				
3111100200	MBA-Ex empty 606030	58	64	34				
3111100400	MBA-Ex empty 906030	98	64	35				
3111100600	MBA-Ex empty 156030	150	64	34				
3111100900	MBA-Ex empty 708055	75	80	57	■	■		
3111101100	MBA-Ex empty 128055	125	80	57	■	■		■
3111101300	MBA-Ex empty 178055	175	80	57	■	■		■
3111101400	MBA-Ex empty 258050	250	80	57	■	■		■
3111105500	MBA-Ex empty 101080	100	100	80	■	■	■	■
3111106500	MBA-Ex empty 161080	160	100	80	■	■	■	■
3111106600	MBA-Ex empty 201080	200	100	80	■	■	■	■
3111101600	MBA-Ex empty 121265	122	120	65	■	■	■	■
3111101800	MBA-Ex empty 121280	122	120	80	■	■	■	■
3111101900	MBA-Ex empty 121290	122	120	90	■	■	■	■
3111102000	MBA-Ex empty 221265	220	120	65	■	■	■	■
3111102200	MBA-Ex empty 221280	220	120	80	■	■	■	■
3111102300	MBA-Ex empty 221290	220	120	90	■	■	■	■
3111102400	MBA-Ex empty 361280	360	122	80	■	■	■	■
3111104500	MBA-Ex empty 141490	140	140	90	■	■	■	■
3111107500	MBA-Ex empty 181490	180	140	90	■	■	■	■
3111108500	MBA-Ex empty 201490	200	140	90	■	■	■	■
3111102500	MBA-Ex empty 161690	160	160	90	■	■	■	■
3111104000	MBA-Ex empty 261665	260	160	65	■	■	■	■
3111102600	MBA-Ex empty 261690	260	160	90	■	■	■	■
3111102800	MBA-Ex empty 361690	360	160	90	■	■	■	■
3111102900	MBA-Ex empty 561690	560	160	90	■	■	■	■
3111103000	MBA-Ex empty 202311	200	230	110	■	■	■	■
3111103100	MBA-Ex empty 282311	280	230	110	■	■	■	■
3111103202	MBA-Ex empty 332311	330	230	110	■	■	■	■
3111103300	MBA-Ex empty 332318	330	230	180	■	■	■	■
3111103400	MBA-Ex empty 402311	400	230	110	■	■	■	■
3111103500	MBA-Ex empty 403111	400	310	110	■	■	■	■
3111103600	MBA-Ex empty 403118	400	310	180	■	■	■	■
3111103700	MBA-Ex empty 602311	600	230	110	■	■	■	■
3111103800	MBA-Ex empty 603111	600	310	110	■	■	■	■
3111103900	MBA-Ex empty 603118	600	310	180	■	■	■	■

L = Length, W = Width, H = Height, TS = Mounting rail, M = Mounting plate, WL = Wall mounting brackets, GA = External hinges  
Technical drawings and further information about our products can be found online at [www.multi-box.com](http://www.multi-box.com)

Aluminium-Ex Enclosures MBA-Ex e

Junction boxes with component certificate  
Schutzart IP 66



**MULTI-BOX Aluminium-Ex e junction boxes are conform to all installation field requirements where explosive concentrations of gases and dusts can appear - zones 1 and 2 as well as 21 and 22 and with temperature classes, T4 to T6.** Temperature class 6 signifies that even in the case of assembled terminals, the maximum total temperature does not exceed 85°C, neither inside nor outside the enclosure, and therefore combustible gases and dust cannot be ignited. In certain cases, where the application or specification permits the combination of circuitry, the Ex-junction box with the protection type increased safety «e» can be combined with the intrinsically safe type «i», however the minimum clearance and creepage distance between the terminals of both power circuits must be 50 mm. Even in this case there is no heating of the intrinsically safe power circuit.

INFORMATION

- ▶ Test report no.: IB-14-3-007 according to ATEX for zones 1 and 2 as well as 21 and 22
- ▶ EC-Prototype Examination Certificate IBExU 10ATEX1159 according to directive 2014/34/EU
- ▶ Certificate No. IEC: IECEx IBE 14.0021
- ▶ Continuous operation temperature from -55°C up to +135°C
- ▶ Protection class IP 66 according to EN 60529
- ▶ Examinations and standards EN 60079-0, EN 60079-7, EN 60079-11 and EN 60079-31
- ▶ Cover screws with captive function made of stainless steel
- ▶ Silicone lid seal glued as o-ring
- ▶ External earthing connection from 2,5 mm² up to 120 mm²
- ▶ Mounting rail TS 15/7,5 or TS 35/7,5
- ▶ Earthing connection points inside. Optionally with earthing bar or PE-terminals
- ▶ Markings Ex II 2G Ex e II C T6 to T4 Gb or Ex II 2D Ex tb III C T 85°C Db
- ▶ Type plate on the outer side of the lid indicating the maximum voltage
- ▶ Powder-coating in colour silver-grey similar to RAL 7001



▶ PDF DXF 3D

MBA-EX

ACCESSORIES ON DEMAND

- ▶ Certified terminals (according to approvals)
- ▶ Ex-tested cable glands and sealing plugs made of stainless steel, brass or polyamide
- ▶ Earthing busbars and earthing bolts
- ▶ Mounting plates made of galvanised metal sheet
- ▶ Wall mounting brackets made of stainless steel
- ▶ External hinges made of aluminium

PROCESSING ON DEMAND

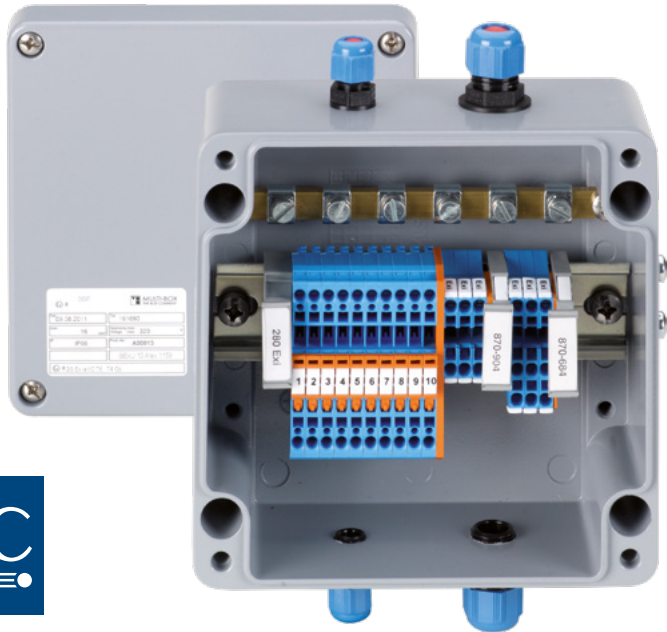
- ▶ Threads and through holes for common cable entries (minimum distance between threads and the sealing edge of the enclosure according to the certification)
- ▶ Special colours according to RAL-specification
- ▶ Silk-screen printing or engraving for marking the enclosure
- ▶ Description plates made of plastic

Article number	Type	L	W	H	TS	M	WL	GA
		mm	mm	mm				
3121100200	MBA-Ex e 606030	58	64	34				
3121100400	MBA-Ex e 906030	98	64	35				
3121100600	MBA-Ex e 156030	150	64	34				
3121100900	MBA-Ex e 708055	75	80	57	■	■		
3121101100	MBA-Ex e 128055	125	80	57	■	■		■
3121101300	MBA-Ex e 178055	175	80	57	■	■		■
3121101400	MBA-Ex e 258050	250	80	57	■	■		■
3121105500	MBA-Ex e 101080	100	100	80	■	■	■	■
3121106500	MBA-Ex e 161080	160	100	80	■	■	■	■
3121106600	MBA-Ex e 201080	200	100	80	■	■	■	■
3121101600	MBA-Ex e 121265	122	120	65	■	■	■	■
3121101800	MBA-Ex e 121280	122	120	80	■	■	■	■
3121101900	MBA-Ex e 121290	122	120	90	■	■	■	■
3121102000	MBA-Ex e 221265	220	120	65	■	■	■	■
3121102200	MBA-Ex e 221280	220	120	80	■	■	■	■
3121102300	MBA-Ex e 221290	220	120	90	■	■	■	■
3121102400	MBA-Ex e 361280	360	122	80	■	■	■	■
3121104500	MBA-Ex e 141490	140	140	90	■	■	■	■
3121107500	MBA-Ex e 181490	180	140	90	■	■	■	■
3121108500	MBA-Ex e 201490	200	140	90	■	■	■	■
3121102500	MBA-Ex e 161690	160	160	90	■	■	■	■
3121104000	MBA-Ex e 261665	260	160	65	■	■	■	■
3121102600	MBA-Ex e 261690	260	160	90	■	■	■	■
3121102800	MBA-Ex e 361690	360	160	90	■	■	■	■
3121102900	MBA-Ex e 561690	560	160	90	■	■	■	■
3121103000	MBA-Ex e 202311	200	230	110	■	■	■	■
3121103100	MBA-Ex e 282311	280	230	110	■	■	■	■
3121103202	MBA-Ex e 332311	330	230	110	■	■	■	■
3121103300	MBA-Ex e 332318	330	230	180	■	■	■	■
3121103400	MBA-Ex e 402311	400	230	110	■	■	■	■
3121103500	MBA-Ex e 403111	400	310	110	■	■	■	■
3121103600	MBA-Ex e 403118	400	310	180	■	■	■	■
3121103700	MBA-Ex e 602311	600	230	110	■	■	■	■
3121103800	MBA-Ex e 603111	600	310	110	■	■	■	■
3121103900	MBA-Ex e 603118	600	310	180	■	■	■	■

L = Length, W = Width, H = Height, TS = Mounting rail, M = Mounting plate, WL = Wall mounting brackets, GA = External hinges  
Technical drawings and further information about our products can be found online at [www.multi-box.com](http://www.multi-box.com)

Aluminium-Ex Enclosures MBA-Ex i

Junction boxes with component certificate  
Protection class IP 66



**MULTI-BOX Aluminium-Ex i junction boxes** are conform to all installation field requirements where explosive concentrations of gases and dusts can appear - zones 1 and 2 as well as 21 and 22 and with temperature classes, T4 to T6. The enclosure protection of the intrinsically safe enclosures «i» is based on the low voltage connections in the enclosure, e.g. data or telephone lines. Thanks to external earthing and the very small amount of ignition energy and temperature rise, the Ex-i junction boxes can be assembled with the maximum amount of terminals, without any complications. The enclosure should also be fitted with visually identifiable intrinsically safe blue cable glands and terminals in order to give notification to the installer, that an intrinsically safe power circuit is installed inside.

INFORMATION

- ▶ Test report no.: IB-14-3-007 according to ATEX for zones 1 and 2 as well as 21 and 22
- ▶ EC-Prototype Examination Certificate IBExU 10ATEX1159 according to directive 2014/34/EU
- ▶ Certificate No. IEC: IECEx IBE 14.0021
- ▶ Continuous operation temperature from -55°C up to +135°C
- ▶ Protection class IP 66 according to EN 60529
- ▶ Examinations and standards EN 60079-0, EN 60079-7, EN 60079-11 and EN 60079-31
- ▶ Cover screws with captive function made of stainless steel
- ▶ Silicone lid seal glued as o-ring
- ▶ External earthing connection from 2,5 mm² up to 120 mm²
- ▶ Mounting rail TS 15/7,5 or TS 35/7,5
- ▶ Earthing connection points inside. Optionally with earthing bar or PE-terminals
- ▶ Markings Ex II 2G Ex ia II C T6 to T4 Gb or Ex II 2D Ex tb III C T 85°C Db
- ▶ Type plate on the outer side of the lid
- ▶ Powder-coating in colour silver-grey similar to RAL 7001



▶ PDF DXF 3D

MBA-Ex

ACCESSORIES ON DEMAND

- ▶ Certified terminals (according to approvals)
- ▶ Ex-tested cable glands and sealing plugs made of stainless steel, brass or polyamide
- ▶ Earthing busbars and earthing bolts
- ▶ Mounting plates made of galvanised metal sheet
- ▶ Wall mounting brackets made of stainless-steel
- ▶ External hinges made of aluminium

PROCESSING ON DEMAND

- ▶ Threads and through holes for common cable entries (minimum distance between threads and the sealing edge of the enclosure according to the certification)
- ▶ Special colours according to RAL-specification
- ▶ Silk-screen printing or engraving for marking the enclosure
- ▶ Description plates made of plastic

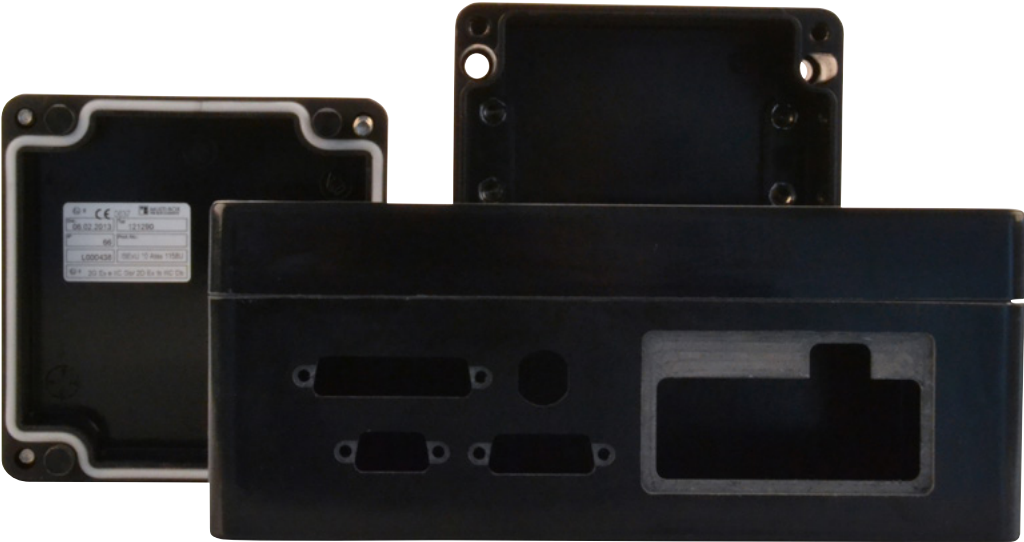
Article number	Type	L	W	H	TS	M	WL	GA
		mm	mm	mm				
3131100200	MBA-Ex i 606030	58	64	34				
3131100400	MBA-Ex i 906030	98	64	35				
3131100600	MBA-Ex i 156030	150	64	34				
3131100900	MBA-Ex i 708055	75	80	57	■	■		
3131101100	MBA-Ex i 128055	125	80	57	■	■		■
3131101300	MBA-Ex i 178055	175	80	57	■	■		■
3131101400	MBA-Ex i 258050	250	80	57	■	■		■
3131105500	MBA-Ex i 101080	100	100	80	■	■	■	■
3131106500	MBA-Ex i 161080	160	100	80	■	■	■	■
3131106600	MBA-Ex i 201080	200	100	80	■	■	■	■
3131101600	MBA-Ex i 121265	122	120	65	■	■	■	■
3131101800	MBA-Ex i 121280	122	120	80	■	■	■	■
3131101900	MBA-Ex i 121290	122	120	90	■	■	■	■
3131102000	MBA-Ex i 221265	220	120	65	■	■	■	■
3131102200	MBA-Ex i 221280	220	120	80	■	■	■	■
3131102300	MBA-Ex i 221290	220	120	90	■	■	■	■
3131102400	MBA-Ex i 361280	360	122	80	■	■	■	■
3131104500	MBA-Ex i 141490	140	140	90	■	■	■	■
3131107500	MBA-Ex i 181490	180	140	90	■	■	■	■
3131108500	MBA-Ex i 201490	200	140	90	■	■	■	■
3131102500	MBA-Ex i 161690	160	160	90	■	■	■	■
3131104000	MBA-Ex i 261665	260	160	65	■	■	■	■
3131102600	MBA-Ex i 261690	260	160	90	■	■	■	■
3131102800	MBA-Ex i 361690	360	160	90	■	■	■	■
3131102900	MBA-Ex i 561690	560	160	90	■	■	■	■
3131103000	MBA-Ex i 202311	200	230	110	■	■	■	■
3131103100	MBA-Ex i 282311	280	230	110	■	■	■	■
3131103202	MBA-Ex i 332311	330	230	110	■	■	■	■
3131103300	MBA-Ex i 332318	330	230	180	■	■	■	■
3131103400	MBA-Ex i 402311	400	230	110	■	■	■	■
3131103500	MBA-Ex i 403111	400	310	110	■	■	■	■
3131103600	MBA-Ex i 403118	400	310	180	■	■	■	■
3131103700	MBA-Ex i 602311	600	230	110	■	■	■	■
3131103800	MBA-Ex i 603111	600	310	110	■	■	■	■
3131103900	MBA-Ex i 603118	600	310	180	■	■	■	■

L = Length, W = Width, H = Height, TS = Mounting rail, M = Mounting plate, WL = Wall mounting brackets, GA = External hinges  
Technical drawings and further information about our products can be found online at [www.multi-box.com](http://www.multi-box.com)



Polyester-Ex Enclosures MBP-Ex empty

Empty enclosures with component certificate  
Protection class IP 66



**MULTI-BOX MBP Polyester-Ex empty enclosures** are conform to all instillation field requirements where **explosive concentrations of gases and dusts can appear. Zones 1 and 2 as well as 21 and 22.** MBP-Ex empty certified enclosures have a component certificate proving the constructional safety of the component enclosure. Therefore the registration and re-testing of the new product is considerably simplified, due to the already approved enclosure construction. MBP-Ex empty enclosures have a u certification and therefore, after the installation of approved electrical components into the enclosure, the complete unit needs to be retested with temperature characteristics included.

INFORMATION

- ▶ Test report no.: IB-13-3-094 according to ATEX for zones 1, 2, 21 and 22
- ▶ EC Prototype Examination certificate IBExU12ATEX1180U according to directive 2014/34/EU
- ▶ Certificate No. IEC: IECEx IBE 14.0018U
- ▶ Continuous operation temperature from -55 °C bis +100 °C
- ▶ Protection class IP 66 according to EN 60529
- ▶ Examinations and standards EN60079-0, EN60079-7 und EN60079-31
- ▶ Cover screws with captive function made of stainless steel
- ▶ Silicone lid seal glued as o-ring
- ▶ Type plate on the inner side of the lid marked with „U“ as incomplete equipment
- ▶ Marking with Ex II 2G Ex e IIC Gb and Ex II 2D Ex tb III C Db



▶ PDF DXF 3D

MBP-Ex

ACCESSORIES ON DEMAND

- ▶ Mounting plates made of galvanised metal sheet
- ▶ Wall mounting brackets made of stainless steel
- ▶ External hinges made of aluminium
- ▶ Earthing busbars and earthing bolts
- ▶ Ex-tested cable glands and sealing plugs made of stainless steel, brass or polyamide

PROCESSING ON DEMAND

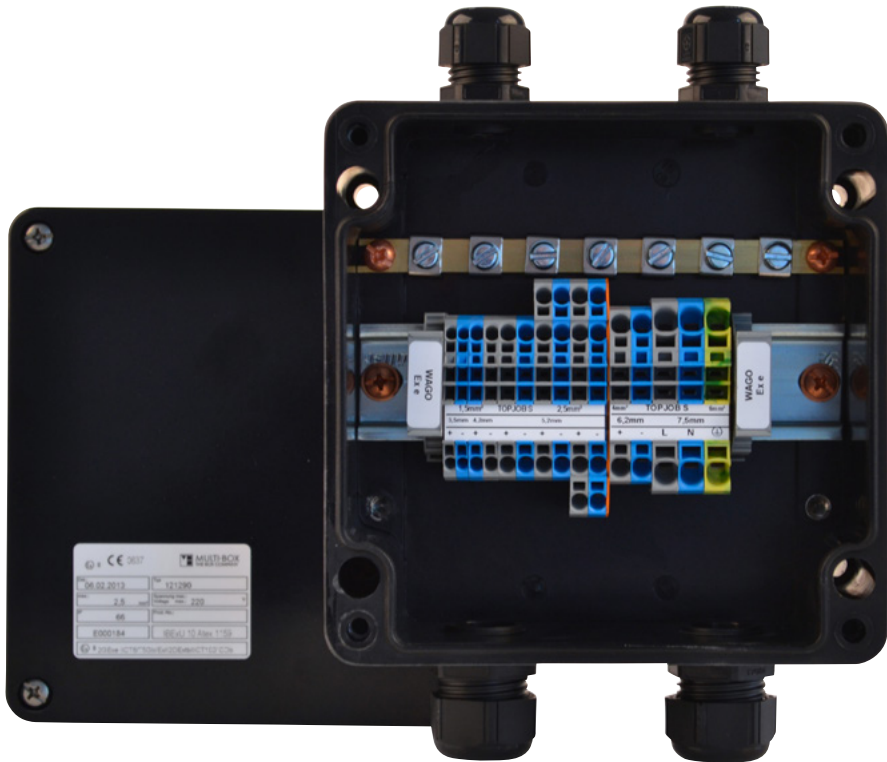
- ▶ All metric threads, PG threads, pass drillings and special threads (minimum distance between single threads and the sealing edge of the enclosure according to the certificate of acceptance)
- ▶ Cut outs for inspection windows or recesses for keypads
- ▶ Silk-screen printing or engraving

Article number	Type	L	W	H	TS	M	WL	GA
		mm	mm	mm				
3211100150	MBP-Ex empty 807555	80	75	55	■	■	■	■
3211100250	MBP-Ex empty 807575	80	75	75	■	■	■	■
3211100360	MBP-Ex empty 117550	110	75	50	■	■	■	■
3211100370	MBP-Ex empty 117555	110	75	55	■	■	■	■
3211100450	MBP-Ex empty 117575	110	75	75	■	■	■	■
3211100550	MBP-Ex empty 167555	160	75	55	■	■	■	■
3211100650	MBP-Ex empty 167575	160	75	75	■	■	■	■
3211100750	MBP-Ex empty 197555	190	75	55	■	■	■	■
3211100850	MBP-Ex empty 197575	190	75	75	■	■	■	■
3211100950	MBP-Ex empty 237550	230	75	50	■	■	■	■
3211101050	MBP-Ex empty 237575	230	75	75	■	■	■	■
3211111150	MBP-Ex empty 121290	122	120	90	■	■	■	■
3211111350	MBP-Ex empty 221290	220	120	90	■	■	■	■
3211111250	MBP-Ex empty 161690	160	160	90	■	■	■	■
3211101550	MBP-Ex empty 361690	360	160	90	■	■	■	■
3211101950	MBP-Ex empty 561690	560	160	90	■	■	■	■
3211111450	MBP-Ex empty 261690	260	160	90	■	■	■	■
3211101660	MBP-Ex empty 252512	255	250	120	■	■	■	■
3211101670	MBP-Ex empty 252516	255	250	160	■	■	■	■
3211101760	MBP-Ex empty 402512	400	250	120	■	■	■	■
3211101770	MBP-Ex empty 402516	400	250	160	■	■	■	■
3211102050	MBP-Ex empty 602512	600	250	120	■	■	■	■
3211101850	MBP-Ex empty 404012	400	405	120	■	■	■	■

L = Length, W = Width, H = Height, TS = Mounting rail, M = Mounting plate, WL = Wall mounting brackets, GA = External hinges  
Technical drawings and further information about our products can be found online at [www.multi-box.com](http://www.multi-box.com)

Polyester-Ex Enclosures MBP-Ex e

Junction boxes with component certificate  
Protection class IP 66



**MULTI-BOX MBP Polyester-Ex e junction boxes** are conform to all installation field requirements where **explosive concentrations of gases and dusts can appear - zones 1 and 2 as well as 21 and 22 and with temperature classes, T5 to T6.** Temperature class 6 signifies that even in the case of assembled terminals, the maximum total temperature does not exceed 85°C, neither inside nor outside the enclosure, and therefore combustible gases and dust cannot be ignited. The graphite additive in the polyester material prevents static charge of the enclosure surface by the low surface resistance = <10 (high -9) ohms. In certain cases, where the application or specification permits the combination of circuits, an Ex-junction box with the protection type increased safety «e» can be combined with the intrinsically safe type «i», however the minimum clearance and creepage distance between the terminals of both power circuits must be 50 mm. Even in this case there is no heating of the intrinsically safe power circuit.

INFORMATION

- ▶ Test report no.: IB-13-3-094 according to ATEX for zones 1, 2, 21 and 22
- ▶ EC Prototype Examination certificate IBExU12ATEX1181 according to directive 2014/34/EU
- ▶ Certificate No. IEC: IECEx IBE 14.0019X
- ▶ Continuous operation temperature from -55 °C bis +100 °C
- ▶ Protection class IP 66 according to EN 60529
- ▶ Examinations and standards EN 60079-0, EN 60079-7, EN 60079-11 and EN 60079-31
- ▶ Cover screws with captive function made of stainless steel
- ▶ Silicone lid seal glued as o-ring
- ▶ Type plate on the outer side of the lid
- ▶ Marking with Ex II 2G Exe IIC T6/T5 Gb or Ex II 2D Ex tb III C T 85°C Db



PDF DXF 3D

MBP-EX

ACCESSORIES ON DEMAND

- ▶ Mounting plates made of galvanised metal sheet
- ▶ Wall mounting brackets made of stainless steel
- ▶ External hinges made of aluminium
- ▶ Earthing busbars and earthing bolts
- ▶ Ex-tested cable glands and sealing plugs made of stainless steel, brass or polyamide

PROCESSING ON DEMAND

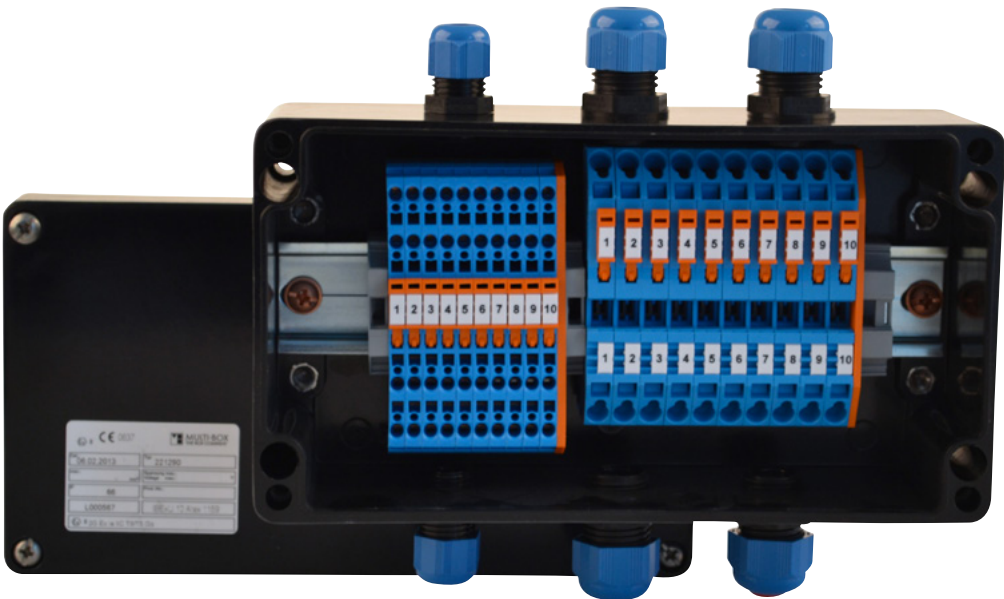
- ▶ Threads and through holes for common cable entries (minimum distance between threads and the sealing edge of the enclosure according to the certification)
- ▶ Cut outs for inspection windows or recesses for keypads
- ▶ Silk-screen printing or engraving

Article number	Type	L	W	H	TS	M	WL	GA
		mm	mm	mm				
3221100150	MBP-Ex e 807555	80	75	55	■	■	■	■
3221100250	MBP-Ex e 807575	80	75	75	■	■	■	■
3221100360	MBP-Ex e 117550	110	75	50	■	■	■	■
3221100370	MBP-Ex e 117555	110	75	55	■	■	■	■
3221100450	MBP-Ex e 117575	110	75	75	■	■	■	■
3221100550	MBP-Ex e 167555	160	75	55	■	■	■	■
3221100650	MBP-Ex e 167575	160	75	75	■	■	■	■
3221100750	MBP-Ex e 197555	190	75	55	■	■	■	■
3221100850	MBP-Ex e 197575	190	75	75	■	■	■	■
3221100950	MBP-Ex e 237550	230	75	50	■	■	■	■
3221101050	MBP-Ex e 237575	230	75	75	■	■	■	■
3221101150	MBP-Ex e 121290	122	120	90	■	■	■	■
3221101350	MBP-Ex e 221290	220	120	90	■	■	■	■
3221101250	MBP-Ex e 161690	160	160	90	■	■	■	■
3221101450	MBP-Ex e 261690	260	160	90	■	■	■	■
3221101550	MBP-Ex e 361690	360	160	90	■	■	■	■
3221101950	MBP-Ex e 561690	560	160	90	■	■	■	■
3221101660	MBP-Ex e 252512	255	250	120	■	■	■	■
3221101670	MBP-Ex e 252516	255	250	160	■	■	■	■
3221101760	MBP-Ex e 402512	400	250	120	■	■	■	■
3221101770	MBP-Ex e 402516	400	250	160	■	■	■	■
3221102050	MBP-Ex e 602512	600	250	120	■	■	■	■
3221101850	MBP-Ex e 404012	400	405	120	■	■	■	■

L = Length, W = Width, H = Height, TS = Mounting rail, M = Mounting plate, WL = Wall mounting brackets, GA = External hinges  
Technical drawings and further information about our products can be found online at [www.multi-box.com](http://www.multi-box.com)

Polyester-Ex Enclosures MBP-Ex i

Junction boxes with component certificate  
Protection class IP 66



**MULTI-BOX Polyester MBP-Ex i junction boxes** are conform to all installation field requirements where explosive concentrations of gases and dusts can appear - zones 1 and 2 as well as 21 and 22 and with temperature classes, T5 to T6. The enclosure protection of the intrinsically safe enclosures «i» is based on the low voltage connections in the enclosure, e.g. data or telephone lines. Thanks to a very small amount of ignition energy and temperature rise, the Ex-i junction boxes can be assembled with the maximum amount of terminals, without any complications. Graphite additive in the polyester material prevents static charge of the enclosure surface by a low surface resistance = <10 (high -9) ohms. The enclosure should also be fitted with visually identifiable intrinsically safe blue cable glands and terminals in order to give notification to the installer, that an intrinsically safe power circuit is installed inside.

INFORMATION

- ▶ Test report no.: IB-13-3-094 according to ATEX for zones 1, 2, 21 and 22
- ▶ EC Prototype Examination certificate IBExU12ATEX1181 according to directive 2014/34/EU
- ▶ Certificate No. IEC: IECEx IBE 14.0019X
- ▶ Continuous operation temperature from -55 °C bis +100 °C
- ▶ Protection class IP 66 according to EN 60529
- ▶ Examinations and standards EN 60079-0, EN 60079-7, EN 60079-11 and EN 60079-31
- ▶ Cover screws with captive function made of stainless steel
- ▶ Silicone lid seal glued as o-ring
- ▶ Type plate on the outer side of the lid
- ▶ Marking with Ex II 2G Ex ia IIC T6/T5 Gb



PDF DXF 3D

MBP-Ex

ACCESSORIES ON DEMAND

- ▶ Mounting plates made of galvanised metal sheet
- ▶ Wall mounting brackets made of stainless-steel
- ▶ External hinges made of aluminium
- ▶ Earthing busbars and earthing bolts
- ▶ Ex-tested cable glands and sealing plugs made of stainless steel, brass or polyamide

PROCESSING ON DEMAND

- ▶ Threads and through holes for common cable entries (minimum distance between threads and the sealing edge of the enclosure according to the certification)
- ▶ Cut outs for inspection windows or recesses for keypads
- ▶ Silk-screen printing or engraving

Article number	Typ	L	W	H	TS	M	WL	GA
		mm	mm	mm				
3231100150	MBP-Ex i 807555	80	75	55	■	■	■	■
3231100250	MBP-Ex i 807575	80	75	75	■	■	■	■
3231100360	MBP-Ex i 117550	110	75	50	■	■	■	■
3231100370	MBP-Ex i 117555	110	75	55	■	■	■	■
3231100450	MBP-Ex i 117575	110	75	75	■	■	■	■
3231100550	MBP-Ex i 167555	160	75	55	■	■	■	■
3231100650	MBP-Ex i 167575	160	75	75	■	■	■	■
3231100750	MBP-Ex i 197555	190	75	55	■	■	■	■
3231100850	MBP-Ex i 197575	190	75	75	■	■	■	■
3231100950	MBP-Ex i 237550	230	75	50	■	■	■	■
3231101050	MBP-Ex i 237575	230	75	75	■	■	■	■
3231101150	MBP-Ex i 121290	122	120	90	■	■	■	■
3231101350	MBP-Ex i 221290	220	120	90	■	■	■	■
3231101250	MBP-Ex i 161690	160	160	90	■	■	■	■
3231101450	MBP-Ex i 261690	260	160	90	■	■	■	■
3231101550	MBP-Ex i 361690	360	160	90	■	■	■	■
3231101950	MBP-Ex i 561690	560	160	90	■	■	■	■
3231101660	MBP-Ex i 252512	255	250	120	■	■	■	■
3231101670	MBP-Ex i 252516	255	250	160	■	■	■	■
3231101760	MBP-Ex i 402512	400	250	120	■	■	■	■
3231101770	MBP-Ex i 402516	400	250	160	■	■	■	■
3231102050	MBP-Ex i 602512	600	250	120	■	■	■	■
3231101850	MBP-Ex i 404012	400	405	120	■	■	■	■

L = Length, W = Width, H = Height, TS = Mounting rail, M = Mounting plate, WL = Wall mounting brackets, GA = External hinges  
Technical drawings and further information about our products can be found online at [www.multi-box.com](http://www.multi-box.com)