

Prese di servizio a pannello ø 22

Sistemi di connessione
Connection systems

Panel mounting connectors ø 22 mm

NEW



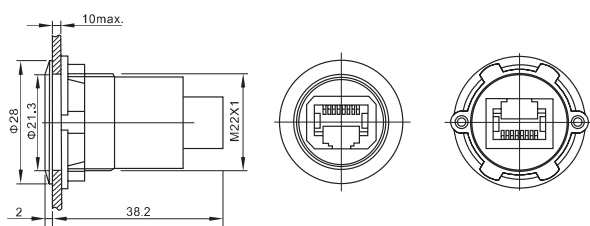
Specifiche tecniche / Technical features

Diametro foratura Diameter cut-out	Spessore Lamiera Sheet thickness	Temperatura operativa Temperatura rating	Umidità operativa Operating humidity	Velocità di trasmissione / transmission rateing		
				USB2.0/USB Mini/ Micro - USB	USB 3.0	USB - C
22 mm	1 - 10 mm	-40 ... +55°C	45-85%RH	>30MB/s	>100MB/s	10GBps (5A fast charging)

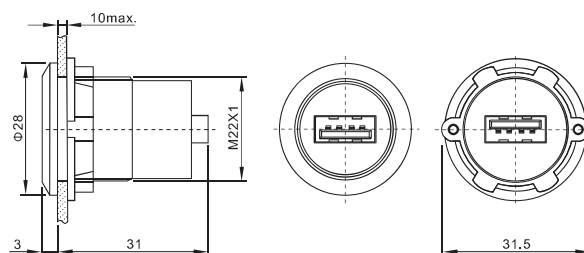
	Tipo Type	Modello Model list	Codice Code	Descrizione Description
	RJ45 Cat.5e	PS-P22MR45	4302212180	Pres a pannello F/F Panel mounting connector
	USB 2.0	PS-P22PU2	4302212100	Pres a pannello F/F Panel mounting connector
	USB 3.0	PS-P22PU3	4302212110	Pres a pannello F/F Panel mounting connector
	USB-B	PS-P22PUB	4302212120	Pres a pannello F/F Panel mounting connector
	USB-C	PS-P22MUC	4302212150	Pres a pannello F/F Metallo (Retro USB 3.0) Metal Panel mounting connector
	USB-Mini	PS-P22MMIU	4302212160	Pres a pannello F/F Metallo Metal Panel mounting connector
	USB-Micro	PS-P22MMOU	4302212170	Pres a pannello F/F Metallo Metal Panel mounting connector
	HDMI	PS-P22MH	4302212190	Pres a pannello F/F Metallo Metal Panel mounting connector
	Tappo IP65	PS-T22IP65	4302212200	Tappo nero IP65 per presa a pannello D22 Ip65 cap, for insert connector

Dimensionali e forature

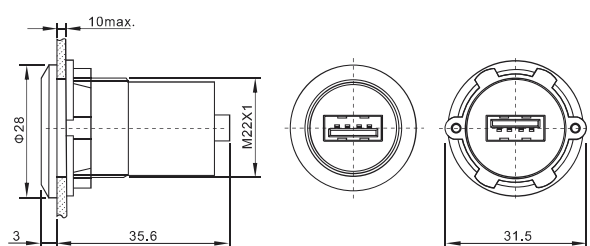
RJ45 - Mod. PS-P22MR45



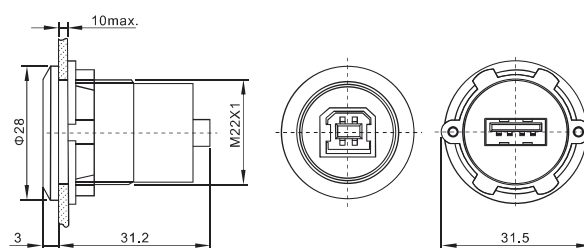
USB 2.0 - Mod. PS-P22PU2



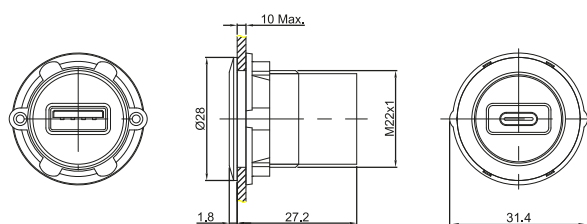
USB 3.0 - Mod. PS-P22PU3



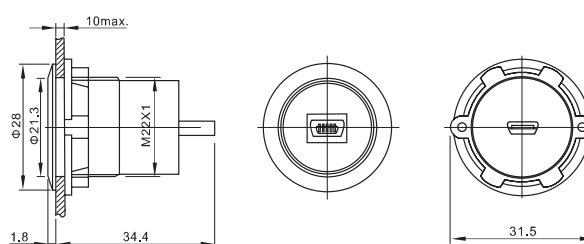
USB-B Mod. PS-P22 PUB



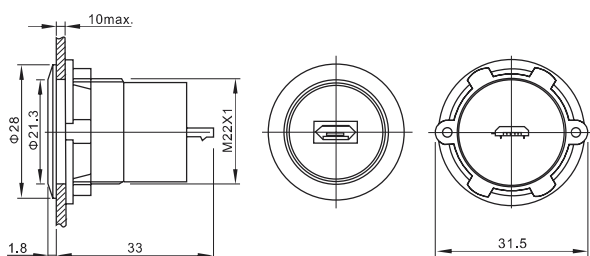
USB C - Mod. PS-P22MUC



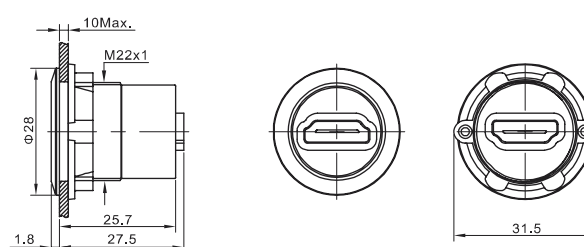
USB MINI - Mod. PS-P22MMIU



USB MICRO - Mod. PS-P22MMOU



HDMI - Mod. PS-P22MH



TAPPO IP65 - Mod. PS-T22IP65

