



DES inserts - small: single, double and quadruple



- ▶ Inserts for cables from 2 to 16 mm in diameter
- ▶ "Blind" version available
- ▶ Grey and black colours available
- ▶ UL94V0 for both colours

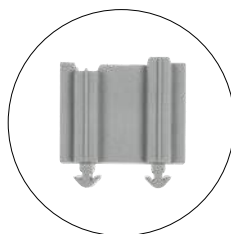


1



The SPP inserts enable several cables from 2 to 16mm in diameter to be installed in the DES splittable frame.

The 2X and 4X versions enable multiple cables to be installed.



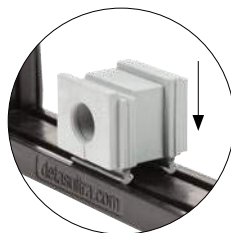
Technical data

Material: TPE

Flammability: self-extinguishing acc. to UL94-V0

Temperature: -40°C... +110°C (static)

Features: halogen and silicone free



Related products

DES 24	DES L5	DESPRED
DES 16	DES L4	DESPRED 90
DES 10	DES L3	
DES Q	DES L2	

Model	Code	Ø Cable	Model	Code	Pcs
GREY		[mm]	BLACK		/pack
SPP 0G	1731020100	"blind"	SPP 0B	1731020200	
SPP 2G	1731020102	2-3	SPP 2B	1731020202	
SPP 3G	1731020103	3-4	SPP 3B	1731020203	
SPP 4G	1731020104	4-5	SPP 4B	1731020204	
SPP 5G	1731020105	5-6	SPP 5B	1731020205	
SPP 6G	1731020106	6-7	SPP 6B	1731020206	
SPP 7G	1731020107	7-8	SPP 7B	1731020207	
SPP 8G	1731020108	8-9	SPP 8B	1731020208	
SPP 9G	1731020109	9-10	SPP 9B	1731020209	10
SPP 10G	1731020110	10-11	SPP 10B	1731020210	
SPP 11G	1731020111	11-12	SPP 11B	1731020211	
SPP 12G	1731020112	12-13	SPP 12B	1731020212	
SPP 13G	1731020113	13-14	SPP 13B	1731020213	
SPP 14G	1731020114	14-15	SPP 14B	1731020214	
SPP 15G	1731020115	15-16	SPP 15B	1731020215	
SPP 16G	1731020116	16-17	SPP 16B	1731020216	
SPP 2x2G	1731020304	2 x 2	SPP 2x2B	1731020404	
SPP 2X3G	1731020306	2 x 3	SPP 2X3B	1731020406	
SPP 2X4G	1731020308	2 x 4	SPP 2X4B	1731020408	
SPP 2X5G	1731020310	2 x 5	SPP 2X5B	1731020410	10
SPP 2X6G	1731020312	2 x 6	SPP 2X6B	1731020412	
SPP 2X7G	1731020314	2 x 7	SPP 2X7B	1731020414	
SPP 2X8G	1731020316	2 x 8	SPP 2X8B	1731020416	
SPP 4X2G	1731020318	4 x 2	SPP 4X2B	1731020418	
SPP 4X3G	1731020320	4 x 3	SPP 4X3B	1731020420	
SPP 4X4G	1731020322	4 x 4	SPP 4X4B	1731020422	10
SPP 4X5G	1731020324	4 x 5	SPP 4X5B	1731020424	
SPP 4X6G	1731020326	4 x 6	SPP 4X6B	1731020426	



RoHS COMPLIANT



UL US pending

up to IP66



NEMA 4X pending

TPE

UL94-V0

-40 +110 °C



Model	Code	Ø Cable	Model	Code	Pcs
GREY		min/max [mm]	BLACK		/pack
					
SPP K0G	1731021100	"blind"	SPP K0B	1731023100	
SPP K1G	1731021110	2.5/7	SPP K1B	1731023110	
SPP K2G	1731021115	5/10	SPP K2B	1731023115	10
SPP K3G	1731021120	7.5/11.5	SPP K3B	1731023120	
SPP K4G	1731021125	10/14	SPP K4B	1731023125	

The SPP K inserts enable non-terminated cables to be accommodated in the DES splittable frames. Each insert has an extended range. The "blind" insert, properly pierced, enables cables from 1 to 16mm in diameter to pass through the frame.



DES inserts with extended range - non split

- ▶ Extended range inserts for non-terminated cables
- ▶ Diameters from 2.5 to 14 mm
- ▶ "Blind" insert pierceable available
- ▶ Grey and black colours available
- ▶ UL94V0 for both colours



1

Technical data

Material: TPE

Flammability: self-extinguishing
acc. to UL94-V0

Temperature: -40°C... +110°C
(static)

Features: halogen and silicone free

Related products

DES 24	DES L5	DESPRED
DES 16	DES L4	DESPRED 90
DES 10	DES L3	
DES Q	DES L2	

