



DES inserts - small: single, double and quadruple



- ▶ Inserts for cables from 2 to 16 mm in diameter
- ▶ "Blind" version available
- ▶ Grey and black colours available
- ▶ UL94V0 for both colours

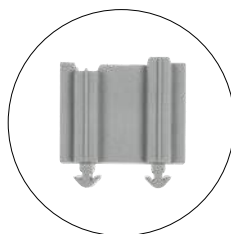


1



The SPP inserts enable several cables from 2 to 16mm in diameter to be installed in the DES splittable frame.

The 2X and 4X versions enable multiple cables to be installed.



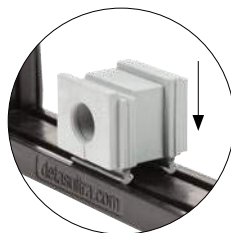
Technical data

Material: TPE

Flammability: self-extinguishing acc. to UL94-V0

Temperature: -40°C... +110°C (static)

Features: halogen and silicone free





Related products

DES 24	DES L5	DESPRED
DES 16	DES L4	DESPRED 90
DES 10	DES L3	
DES Q	DES L2	

Model	Code	Ø Cable	Model	Code	Pcs
GREY		[mm]	BLACK		/pack
SPP 0G	1731020100	"blind"	SPP 0B	1731020200	
SPP 2G	1731020102	2-3	SPP 2B	1731020202	
SPP 3G	1731020103	3-4	SPP 3B	1731020203	
SPP 4G	1731020104	4-5	SPP 4B	1731020204	
SPP 5G	1731020105	5-6	SPP 5B	1731020205	
SPP 6G	1731020106	6-7	SPP 6B	1731020206	
SPP 7G	1731020107	7-8	SPP 7B	1731020207	
SPP 8G	1731020108	8-9	SPP 8B	1731020208	
SPP 9G	1731020109	9-10	SPP 9B	1731020209	10
SPP 10G	1731020110	10-11	SPP 10B	1731020210	
SPP 11G	1731020111	11-12	SPP 11B	1731020211	
SPP 12G	1731020112	12-13	SPP 12B	1731020212	
SPP 13G	1731020113	13-14	SPP 13B	1731020213	
SPP 14G	1731020114	14-15	SPP 14B	1731020214	
SPP 15G	1731020115	15-16	SPP 15B	1731020215	
SPP 16G	1731020116	16-17	SPP 16B	1731020216	
SPP 2x2G	1731020304	2 x 2	SPP 2x2B	1731020404	
SPP 2X3G	1731020306	2 x 3	SPP 2X3B	1731020406	
SPP 2X4G	1731020308	2 x 4	SPP 2X4B	1731020408	
SPP 2X5G	1731020310	2 x 5	SPP 2X5B	1731020410	10
SPP 2X6G	1731020312	2 x 6	SPP 2X6B	1731020412	
SPP 2X7G	1731020314	2 x 7	SPP 2X7B	1731020414	
SPP 2X8G	1731020316	2 x 8	SPP 2X8B	1731020416	
SPP 4X2G	1731020318	4 x 2	SPP 4X2B	1731020418	
SPP 4X3G	1731020320	4 x 3	SPP 4X3B	1731020420	
SPP 4X4G	1731020322	4 x 4	SPP 4X4B	1731020422	10
SPP 4X5G	1731020324	4 x 5	SPP 4X5B	1731020424	
SPP 4X6G	1731020326	4 x 6	SPP 4X6B	1731020426	





Model	Code	Ø Cable	Model	Code	Pcs
GREY		min/max [mm]	BLACK		/pack
					
SPP K0G	1731021100	"blind"	SPP K0B	1731023100	
SPP K1G	1731021110	2.5/7	SPP K1B	1731023110	
SPP K2G	1731021115	5/10	SPP K2B	1731023115	10
SPP K3G	1731021120	7.5/11.5	SPP K3B	1731023120	
SPP K4G	1731021125	10/14	SPP K4B	1731023125	

The SPP K inserts enable non-terminated cables to be accommodated in the DES splittable frames. Each insert has an extended range. The "blind" insert, properly pierced, enables cables from 1 to 16mm in diameter to pass through the frame.



DES inserts with extended range - non split

- ▶ Extended range inserts for non-terminated cables
- ▶ Diameters from 2.5 to 14 mm
- ▶ "Blind" insert pierceable available
- ▶ Grey and black colours available
- ▶ UL94V0 for both colours



1

Technical data

Material: TPE

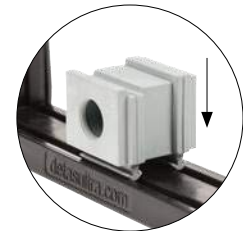
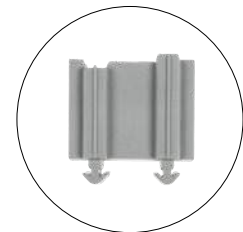
Flammability: self-extinguishing
acc. to UL94-V0

Temperature: -40°C... +110°C
(static)

Features: halogen and silicone free

Related products

DES 24	DES L5	DESPRED
DES 16	DES L4	DESPRED 90
DES 10	DES L3	
DES Q	DES L2	



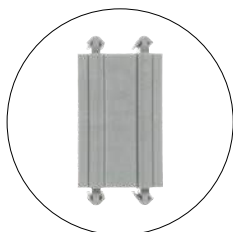


DES insert - large

- ▶ Inserts for cables from 17 to 34 mm in diameter
- ▶ "Blind" version available
- ▶ Grey and black colours available
- ▶ UL94V0 for both colours



The SPG inserts enable several cables from 17 to 34mm in diameter to be installed in the DES splittable frames.



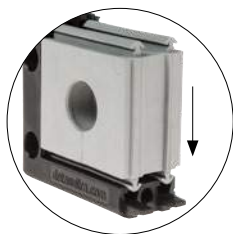
Technical data

Material: TPE

Flammability: self-extinguishing acc. to UL94-V0



Temperature: -40°C... +110°C (static)

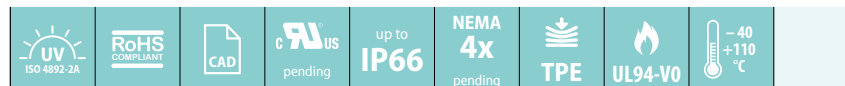
Features: halogen and silicone free



Related products

- DES 24 DESPRED
- DES 16 DESPRED 90
- DES 10
- DES Q

Model	Code	Ø Cable	Model	Code	Pcs
GREY		[mm]	BLACK		/pack
					
SPG 0G	1731022000	"blind"	SPG 0B	1731022020	
SPG 17G	1731022117	17	SPG 17B	1731022217	
SPG 18G	1731022118	18	SPG 18B	1731022218	
SPG 19G	1731022119	19	SPG 19B	1731022219	
SPG 20G	1731022120	20	SPG 20B	1731022220	
SPG 21G	1731022121	21	SPG 21B	1731022221	
SPG 22G	1731022122	22	SPG 22B	1731022222	
SPG 23G	1731022123	23	SPG 23B	1731022223	
SPG 24G	1731022124	24	SPG 24B	1731022224	
SPG 25G	1731022125	25	SPG 25B	1731022225	10
SPG 26G	1731022126	26	SPG 26B	1731022226	
SPG 27G	1731022127	27	SPG 27B	1731022227	
SPG 28G	1731022128	28	SPG 28B	1731022228	
SPG 29G	1731022129	29	SPG 29B	1731022229	
SPG 30G	1731022130	30	SPG 30B	1731022230	
SPG 31G	1731022131	31	SPG 31B	1731022231	
SPG 32G	1731022132	32	SPG32B	1731022232	
SPG 33G	1731022133	33	SPG33B	1731022233	
SPG 34G	1731022134	34	SPG34B	1731022234	

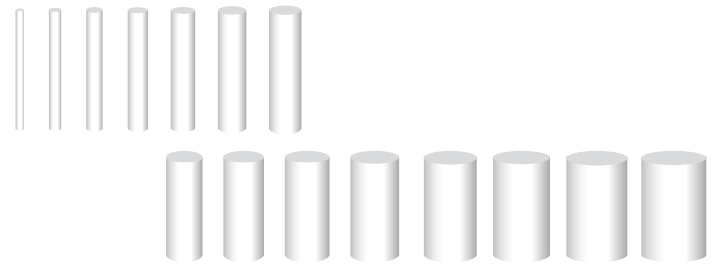




Model	Code	Ø Diameter [mm]	Length [mm]	Pcs /pack
ISP 2	1731040002	2	30	20
ISP 3	1731040003	3	30	
ISP 4	1731040004	4	30	
ISP 5	1731040005	5	30	
ISP 6	1731040006	6	30	
ISP 7	1731040007	7	30	
ISP 8	1731040008	8	25	
ISP 9	1731040009	9	25	
ISP 10	1731040010	10	25	
ISP 11	1731040011	11	25	
ISP 12	1731040012	12 <td 25		
ISP 13	1731040013	13	25	
ISP 14	1731040014	14	25	
ISP 15	1731040015	15	25	
ISP 16	1731040016	16	25	

Plugs for SPP series

► Plastic plugs for SPP inserts, from 2 to 16 mm in diameter



1

The ISP plugs fit perfectly into the SPP insert hole restoring the water protection property of the DES splittable frames. These range from 2 to 16mm in diameter.

Technical data

Material: PC+GF

Flammability: self-extinguishing
acc. to UL94-V0

Temperature: -40°C... +155°C
(static)

Features: halogen and silicone free

Related products

DES 24	DES L5	DESPRED
DES 16	DES L4	DESPRED 90
DES 10	DES L3	
DES Q	DES L2	

