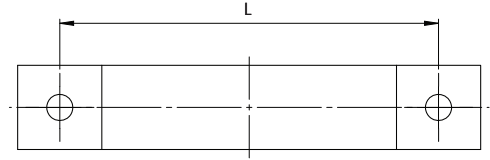
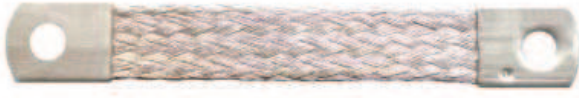


MB

Earthing tapes



Product description

Manufactured with highly flexible E-Cu stranded wires with connecting end pads made of tinned copper strips.

The minimum transition and connecting resistance makes them perfectly suitable for use as earthing tapes.

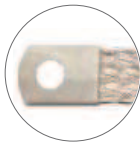
Advantages

- Available in various lengths and cross-sections
- Cost-effective
- Low transition impedances

Specification

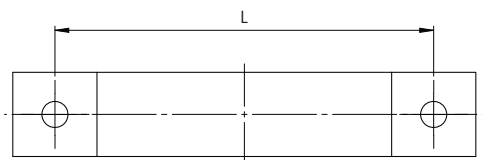
Material

Cu-ETP with connecting end pads made of tinned copper strips



Type	Order No.	Length L [mm]	Cross-section mm ²	Hole size	PU
MB 100 6 M6	32700	100	6	M6	1
MB 150 6 M6	32701	150	6	M6	1
MB 200 6 M6	32702	200	6	M6	1
MB 300 6 M6	32703	300	6	M6	1
MB 400 6 M6	32704	400	6	M6	1
MB 500 6 M6	32705	500	6	M6	1
MB 100 10 M6	32730	100	10	M6	1
MB 100 10 M8	32731	100	10	M8	1
MB 150 10 M8	32732	150	10	M8	1
MB 200 10 M6	32733	200	10	M6	1
MB 200 10 M8	32734	200	10	M8	1
MB 300 10 M6	32735	300	10	M6	1
MB 300 10 M8	32736	300	10	M8	1
MB 400 10 M6	32737	400	10	M6	1
MB 400 10 M8	32738	400	10	M8	1
MB 500 10 M6	32739	500	10	M6	1
MB 100 16 M6	32760	100	16	M6	1
MB 100 16 M8	32761	100	16	M8	1
MB 150 16 M6	32762	150	16	M6	1
MB 150 16 M8	32763	150	16	M8	1
MB 200 16 M6	32764	200	16	M6	1

MB Earthing tapes



Type	Order No.	Length L [mm]	Cross-section mm ²	Hole size	PU
MB 200 16 M8	32765	200	16	M8	1
MB 250 16 M8	32766	250	16	M8	1
MB 300 16 M6	32767	300	16	M6	1
MB 300 16 M8	32768	300	16	M8	1
MB 350 16 M8	32769	350	16	M8	1
MB 400 16 M8	32770	400	16	M8	1
MB 500 16 M8	32771	500	16	M8	1
MB 600 16 M8	32772	600	16	M8	1
MB 100 25 M10	32800	100	25	M10	1
MB 150 25 M10	32801	150	25	M10	1
MB 200 25 M8	32802	200	25	M8	1
MB 200 25 M10	32803	200	25	M10	1
MB 250 25 M8	32804	250	25	M8	1
MB 250 25 M10	32805	250	25	M10	1
MB 300 25 M8	32806	300	25	M8	1
MB 300 25 M10	32807	300	25	M10	1
MB 350 25 M10	32808	350	25	M10	1
MB 400 25 M8	32809	400	25	M8	1
MB 500 25 M8	32810	500	25	M8	1
MB 600 25 M8	32811	600	25	M8	1

Product description

Manufactured with highly flexible E-Cu stranded wires with connecting end pads made of tinned copper strips.

The minimum transition and connecting resistance makes them perfectly suitable for use as earthing tapes.

Advantages

- Available in various lengths and cross-sections
- Cost-effective
- Low transition impedances

Specification

Material: Cu-ETP with connecting end pads made of tinned copper strips

