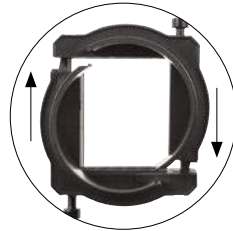




## Splittable cable gland with locknut

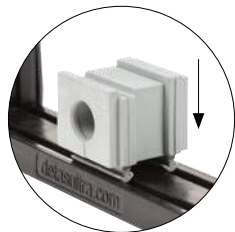


- ▶ Patented cable entry system
- ▶ Frame screws in AISI304 with Black Dacromet finishing
- ▶ Up to IP66
- ▶ Strain relief according to EN 62444
- ▶ Sturdy construction IK10



The DESPRED series are splittable cable glands for metric threads.

The 63 model can be used with small, multiple and large inserts for cables from 2 to 34mm in diameter. With multiple inserts it is possible to accommodate up to 16 cables. Future cable size changes can also be easily accommodated using various inserts.



### Technical data

**Material:** PP+GF

**Flammability:** self-extinguishing acc. to UL94-V0

**Temperature:** -40°C... +155°C (static)

**Features:** halogen and silicone free

### Related products



Insert SPG



Insert SPP and SPP K






Insert SPP 2x



Insert SPP 4x

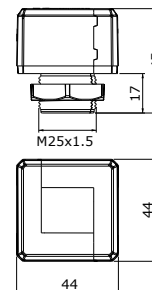
Hydraulic punch driver HY360

Model	Code	Some possible configurations	Pcs /pack
DESPRED 25	1731050025		10
DESPRED 32	1731050032		10
DESPRED 63	1731050063		10

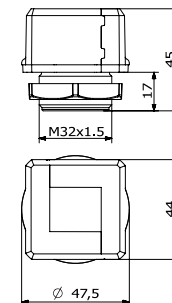
Upon request: DDM SUB-D9	1731052032	Special size M32 for SUB-D9	10
			

### Dimensions [mm]

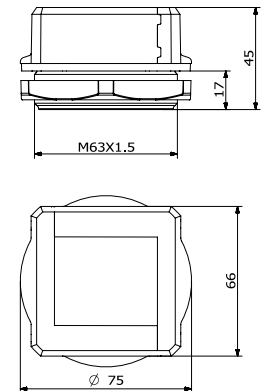
#### DESPRED 25



#### DESPRED 32



#### DESPRED 63





Model	Code	Some possible configurations	Pcs
			/pack
DESPRED 90-50	1731050250		10



## Splittable cable gland and locknut with 90° entry

- ▶ 90° cable entry system
- ▶ Fixing without screws
- ▶ Strain relief according to EN 62444
- ▶ IP54
- ▶ Sturdy construction IK10



The DESPRED 90 series are splittable cable glands for metric threads with 90° entry.

The 90-50 model can be used with small, multiple and large inserts for cables from 2 to 34mm in diameter. With multiple inserts it is possible to accommodate up to 16 cables. Future cable size changes can also be easily accommodated using various inserts.

### Technical data

**Material:** PP+GF

**Flammability:** self-extinguishing acc. to UL94-V0

**Temperature:** -40°C... +155°C (static)

**Features:** halogen and silicone free

### Related products



Insert SPG



Insert SPP and SPP K



Insert SPP 2x



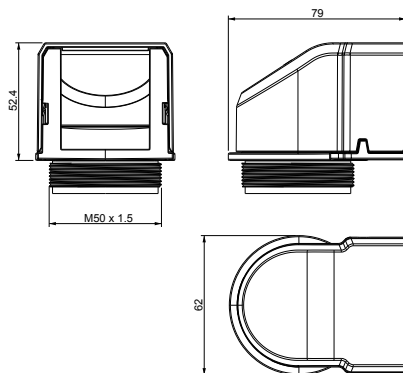
Insert SPP 4x

Hydraulic punch driver HY360 and related punches



### Dimensions [mm]

#### DESPRED 90-50





## DES inserts - small: single, double and quadruple



- ▶ Inserts for cables from 2 to 16 mm in diameter
- ▶ "Blind" version available
- ▶ Grey and black colours available
- ▶ UL94V0 for both colours

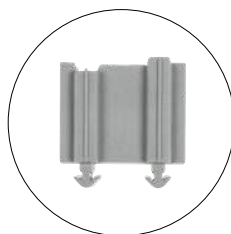


1



The SPP inserts enable several cables from 2 to 16mm in diameter to be installed in the DES splittable frame.

The 2X and 4X versions enable multiple cables to be installed.



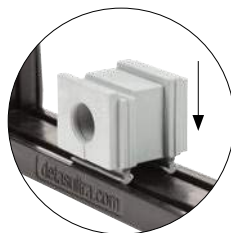
### Technical data

**Material:** TPE

**Flammability:** self-extinguishing acc. to UL94-V0

**Temperature:** -40°C... +110°C (static)

**Features:** halogen and silicone free





### Related products

DES 24	DES L5	DESPRED
DES 16	DES L4	DESPRED 90
DES 10	DES L3	
DES Q	DES L2	

Model	Code	Ø Cable	Model	Code	Pcs
GREY		[mm]	BLACK		/pack
SPP 0G	1731020100	"blind"	SPP 0B	1731020200	10
SPP 2G	1731020102	2-3	SPP 2B	1731020202	
SPP 3G	1731020103	3-4	SPP 3B	1731020203	
SPP 4G	1731020104	4-5	SPP 4B	1731020204	
SPP 5G	1731020105	5-6	SPP 5B	1731020205	
SPP 6G	1731020106	6-7	SPP 6B	1731020206	
SPP 7G	1731020107	7-8	SPP 7B	1731020207	
SPP 8G	1731020108	8-9	SPP 8B	1731020208	
SPP 9G	1731020109	9-10	SPP 9B	1731020209	
SPP 10G	1731020110	10-11	SPP 10B	1731020210	
SPP 11G	1731020111	11-12	SPP 11B	1731020211	
SPP 12G	1731020112	12-13	SPP 12B	1731020212	
SPP 13G	1731020113	13-14	SPP 13B	1731020213	
SPP 14G	1731020114	14-15	SPP 14B	1731020214	
SPP 15G	1731020115	15-16	SPP 15B	1731020215	
SPP 16G	1731020116	16-17	SPP 16B	1731020216	
SPP 2x2G	1731020304	2 x 2	SPP 2x2B	1731020404	10
SPP 2X3G	1731020306	2 x 3	SPP 2X3B	1731020406	
SPP 2X4G	1731020308	2 x 4	SPP 2X4B	1731020408	
SPP 2X5G	1731020310	2 x 5	SPP 2X5B	1731020410	
SPP 2X6G	1731020312	2 x 6	SPP 2X6B	1731020412	
SPP 2X7G	1731020314	2 x 7	SPP 2X7B	1731020414	
SPP 2X8G	1731020316	2 x 8	SPP 2X8B	1731020416	
SPP 4X2G	1731020318	4 x 2	SPP 4X2B	1731020418	10
SPP 4X3G	1731020320	4 x 3	SPP 4X3B	1731020420	
SPP 4X4G	1731020322	4 x 4	SPP 4X4B	1731020422	
SPP 4X5G	1731020324	4 x 5	SPP 4X5B	1731020424	
SPP 4X6G	1731020326	4 x 6	SPP 4X6B	1731020426	





Model	Code	Ø Cable	Model	Code	Pcs
GREY		min/max [mm]	BLACK		/pack
					
<b>SPP K0G</b>	<b>1731021100</b>	<b>"blind"</b>	<b>SPP K0B</b>	<b>1731023100</b>	
<b>SPP K1G</b>	<b>1731021110</b>	<b>2.5/7</b>	<b>SPP K1B</b>	<b>1731023110</b>	
<b>SPP K2G</b>	<b>1731021115</b>	<b>5/10</b>	<b>SPP K2B</b>	<b>1731023115</b>	<b>10</b>
<b>SPP K3G</b>	<b>1731021120</b>	<b>7.5/11.5</b>	<b>SPP K3B</b>	<b>1731023120</b>	
<b>SPP K4G</b>	<b>1731021125</b>	<b>10/14</b>	<b>SPP K4B</b>	<b>1731023125</b>	

The SPP K inserts enable non-terminated cables to be accommodated in the DES splittable frames. Each insert has an extended range. The "blind" insert, properly pierced, enables cables from 1 to 16mm in diameter to pass through the frame.



## DES inserts with extended range - non split

- ▶ Extended range inserts for non-terminated cables
- ▶ Diameters from 2.5 to 14 mm
- ▶ "Blind" insert pierceable available
- ▶ Grey and black colours available
- ▶ UL94V0 for both colours



1

### Technical data

**Material:** TPE

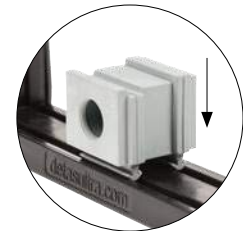
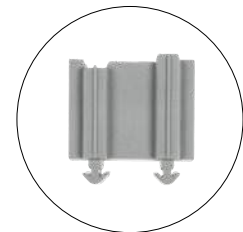
**Flammability:** self-extinguishing  
acc. to UL94-V0

**Temperature:** -40°C... +110°C  
(static)

**Features:** halogen and silicone free

### Related products

DES 24	DES L5	DESPRED
DES 16	DES L4	DESPRED 90
DES 10	DES L3	
DES Q	DES L2	





## DES insert - large

- ▶ Inserts for cables from 17 to 34 mm in diameter
- ▶ "Blind" version available
- ▶ Grey and black colours available
- ▶ UL94V0 for both colours



The SPG inserts enable several cables from 17 to 34mm in diameter to be installed in the DES splittable frames.

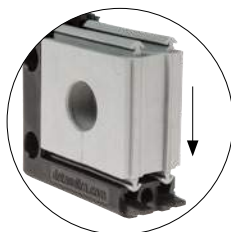
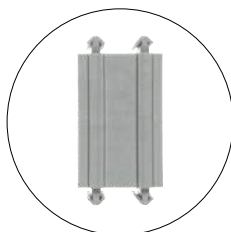
### Technical data

**Material:** TPE

**Flammability:** self-extinguishing acc. to UL94-V0



**Temperature:** -40°C... +110°C (static)

**Features:** halogen and silicone free



### Related products

DES 24    DESPRED  
DES 16    DESPRED 90  
DES 10  
DES Q

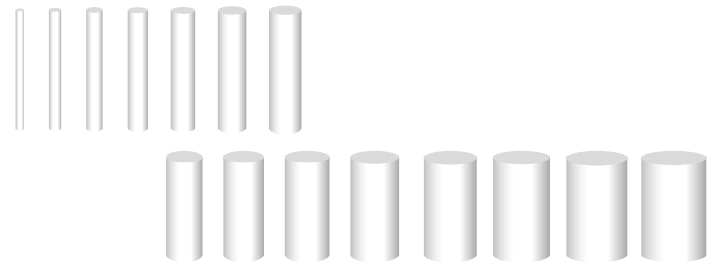
Model	Code	Ø Cable	Model	Code	Pcs
GREY		[mm]	BLACK		/pack
					
<b>SPG 0G</b>	<b>1731022000</b>	<b>"blind"</b>	<b>SPG 0B</b>	<b>1731022020</b>	
<b>SPG 17G</b>	<b>1731022117</b>	<b>17</b>	<b>SPG 17B</b>	<b>1731022217</b>	
<b>SPG 18G</b>	<b>1731022118</b>	<b>18</b>	<b>SPG 18B</b>	<b>1731022218</b>	
<b>SPG 19G</b>	<b>1731022119</b>	<b>19</b>	<b>SPG 19B</b>	<b>1731022219</b>	
<b>SPG 20G</b>	<b>1731022120</b>	<b>20</b>	<b>SPG 20B</b>	<b>1731022220</b>	
<b>SPG 21G</b>	<b>1731022121</b>	<b>21</b>	<b>SPG 21B</b>	<b>1731022221</b>	
<b>SPG 22G</b>	<b>1731022122</b>	<b>22</b>	<b>SPG 22B</b>	<b>1731022222</b>	
<b>SPG 23G</b>	<b>1731022123</b>	<b>23</b>	<b>SPG 23B</b>	<b>1731022223</b>	
<b>SPG 24G</b>	<b>1731022124</b>	<b>24</b>	<b>SPG 24B</b>	<b>1731022224</b>	
<b>SPG 25G</b>	<b>1731022125</b>	<b>25</b>	<b>SPG 25B</b>	<b>1731022225</b>	10
<b>SPG 26G</b>	<b>1731022126</b>	<b>26</b>	<b>SPG 26B</b>	<b>1731022226</b>	
<b>SPG 27G</b>	<b>1731022127</b>	<b>27</b>	<b>SPG 27B</b>	<b>1731022227</b>	
<b>SPG 28G</b>	<b>1731022128</b>	<b>28</b>	<b>SPG 28B</b>	<b>1731022228</b>	
<b>SPG 29G</b>	<b>1731022129</b>	<b>29</b>	<b>SPG 29B</b>	<b>1731022229</b>	
<b>SPG 30G</b>	<b>1731022130</b>	<b>30</b>	<b>SPG 30B</b>	<b>1731022230</b>	
<b>SPG 31G</b>	<b>1731022131</b>	<b>31</b>	<b>SPG 31B</b>	<b>1731022231</b>	
<b>SPG 32G</b>	<b>1731022132</b>	<b>32</b>	<b>SPG32B</b>	<b>1731022232</b>	
<b>SPG 33G</b>	<b>1731022133</b>	<b>33</b>	<b>SPG33B</b>	<b>1731022233</b>	
<b>SPG 34G</b>	<b>1731022134</b>	<b>34</b>	<b>SPG34B</b>	<b>1731022234</b>	



Model	Code	Ø Diameter [mm]	Length [mm]	Pcs /pack
ISP 2	1731040002	2	30	20
ISP 3	1731040003	3	30	
ISP 4	1731040004	4	30	
ISP 5	1731040005	5	30	
ISP 6	1731040006	6	30	
ISP 7	1731040007	7	30	
ISP 8	1731040008	8	25	
ISP 9	1731040009	9	25	
ISP 10	1731040010	10	25	
ISP 11	1731040011	11	25	
ISP 12	1731040012	12	25	
ISP 13	1731040013	13	25	
ISP 14	1731040014	14	25	
ISP 15	1731040015	15	25	
ISP 16	1731040016	16	25	

### Plugs for SPP series

► Plastic plugs for SPP inserts, from 2 to 16 mm in diameter



1

The ISP plugs fit perfectly into the SPP insert hole restoring the water protection property of the DES splittable frames. These range from 2 to 16mm in diameter.

### Technical data

**Material:** PC+GF

**Flammability:** self-extinguishing  
acc. to UL94-V0

**Temperature:** -40°C... +155°C  
(static)

**Features:** halogen and silicone free

### Related products

DES 24	DES L5	DESPRED
DES 16	DES L4	DESPRED 90
DES 10	DES L3	
DES Q	DES L2	

