



KEL-DPF

Cable entry grommets



IP68

Type	Order No.	Thread metric	External diameter	Clamping range	PU
KEL-DPF 25 3-12	<input type="checkbox"/> 42652 <input type="checkbox"/> 50652	M25 × 1.5	39 mm	3 - 12 mm	5
KEL-DPF 32 6-18	<input type="checkbox"/> 42653 <input type="checkbox"/> 50653	M32 × 1.5	46 mm	6 - 18 mm	5
KEL-DPF 40 12-27	<input type="checkbox"/> 42654 <input type="checkbox"/> 50654	M40 × 1.5	54 mm	12 - 27 mm	5
KEL-DPF 50 22-36	<input type="checkbox"/> 42655 <input type="checkbox"/> 50655	M50 × 1.5	64 mm	22 - 36 mm	5
KEL-DPF 63 27-50	<input type="checkbox"/> 42656 <input type="checkbox"/> 50656	M63 × 1.5	77 mm	27 - 50 mm	5
NEW KEL-DPF 75 39-60	<input type="checkbox"/> 42657 <input type="checkbox"/> 50657	M75 × 1.5	89 mm	39 - 60 mm	5
NEW KEL-DPF 85 48-70	<input type="checkbox"/> 42658 <input type="checkbox"/> 50658	M85 × 2	99 mm	48 - 70 mm	5

Wrenches

for M75/M85 plastic locknuts

For mounting the new KEL-DPF sizes we offer suitable wrenches with widths for M75 and M85 plastic locknuts. Material: aluminium

M75: Order No. 61436 | M85: Order No. 61437 | PU: 1



* Only valid for grey product types

Product description

The KEL-DPF was developed particularly for routing large or unknown sizes of service cables into a switch cabinet or machine (max. cable diameter 70 mm). Due to the flexibility and unique pyramid shape, cable entry and flexible positioning is much easier compared to using conventional cable glands. Also perfect for bundling or restraining large cables.

Cutting of DPF grommets:

- Cable diameter less 25%. The corresponding diameters are marked on the grommet

It is recommended that additional strain relief be provided for cables as part of the installation.

Advantages & benefits

- Quick and tool-free assembly
- It is possible to install rigid cables at angles
- Suitable for metric cut-outs
- Polyamide locknuts are included in the shipment

Specifications

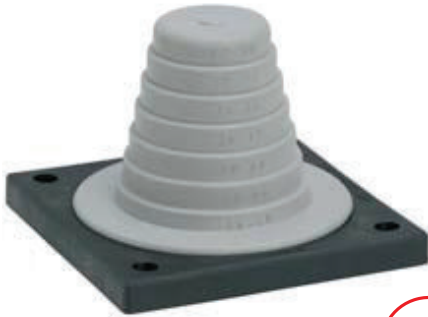
Material	Thread frame: Polyamide (PA) Pyramid: Elastomer
Colour	<input type="checkbox"/> grey (similar RAL 7035) <input type="checkbox"/> black
Flame class	UL94-Vo, self-extinguishing
IP rating	IP66/ IP68 (certified acc. to EN 60529)
NEMA type rating	NEMA type 12 (acc. to UL 50E)
Temperature	- 40°C to + 90°C (static)
Properties	Halogen-free, silicone-free
Thread length	14 mm
Cut-out dimensions	Metric sizes

Accessories

FP Flanged plates	152 - 157
MP Module plates	148 - 149

KEL-JUMBO flex

Cable entry grommets



Product description

The KEL-JUMBO flex is a flexible cable entry grommet for cables without connectors with a diameter range from 27 - 68 mm.

They are ideal for the routing supply cables into the switch cabinets.

Cutting of KEL-JUMBO flex grommets:

- Cable diameter less 25%
- The corresponding diameters are marked on the grommet

It is recommended that additional strain relief be provided for cables as part of the installation.

Advantages & benefits

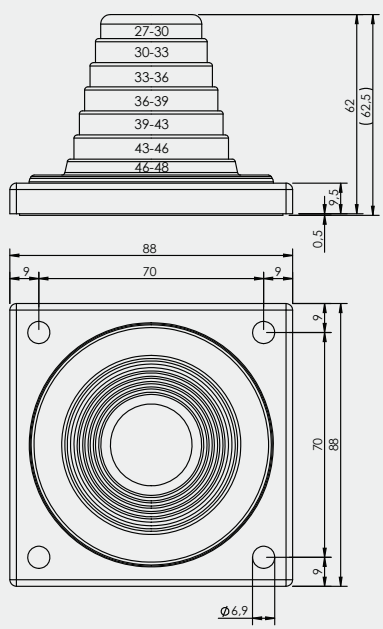
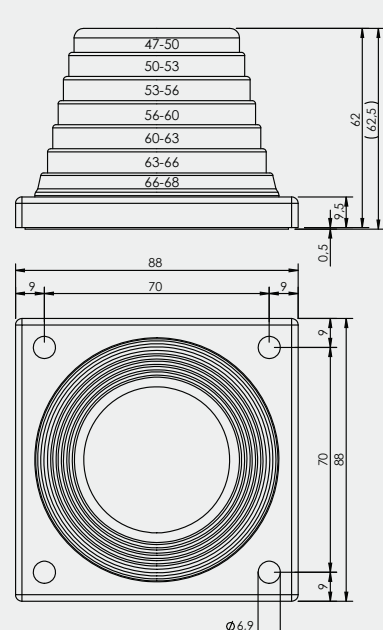
- Quick assembly
- Grommets allow dynamic and flexible movement of rigid cables
- Compact installation area (88 × 88 mm)

Specifications

Material	Frame: Polyamide (PA) Pyramid: Elastomer
Flame class	UL94-Vo, self-extinguishing
IP rating	IP54
NEMA type rating	NEMA type 12 (acc. to UL 50E)
Temperature	- 40°C to + 90°C (static)
Properties	Halogen-free, silicone-free
Cut-out dimensions	Round, \varnothing -cable +20%

Accessories

MP Module plates	148 - 149
BP Blank plates	158 - 159

Description	Type	Order No.	Clamping range	PU
	KEL-JUMBO flex 27-48	42614	27 - 48 mm	1
	KEL-JUMBO flex 47-68	42616	47 - 68 mm	1



KEL-ULTRA flex

Cable entry grommets



Type	Order No.	Sealing range	PU
------	-----------	---------------	----

KEL-ULTRA flex 1 incl. Fixing screws	42630	25 - max. 90 mm cable diameter	1
KEL-ULTRA flex 2 incl. Fixing screws	42631	75 - max. 115 mm cable diameter	1

Product description

The KEL-ULTRA flex is designed as a cable entry grommet for power supply cables or any large cable or conduit that is difficult to manage. The KEL-ULTRA flex comes in two sizes and is ideal for routing and sealing cables and conduits with a diameter from 25 to 115 mm. Due to the high flexibility of the elastomer pyramid, inserting large, thick cables with KEL-ULTRA flex is easier than using standard cable glands.

After inserting the cable or conduit, the KEL-ULTRA flex is quickly and easily mounted with the metal ring and screws. This ring enables a circular fixing and sealing of the grommet at the enclosure wall. The ring is supplied with each KEL-ULTRA flex. Cutting of grommets: Cable diameter less 25%. It is recommended that additional strain relief be provided for cables as part of the installation.

Advantages & benefits

- Quick assembly
- Grommets allow for easy orientation and seal of rigid cables
- IP66 / up to NEMA type 12 rating

Specifications

Material	Pyramid: Elastomer Fixing metal ring: Steel, zinc-plated Blind plate: Steel, zinc-plated
Flame class	UL94-Vo, self-extinguishing
IP rating	IP66, when fastened with 8 screws (certified acc. to EN 60529)
NEMA type rating	NEMA type 12 (acc. to UL 50E)
Temperature	- 40°C to + 90°C (static)
Properties	Halogen-free, silicone-free
Cut-out dimension	Round, Ø-cable +30%, max. Ø 140 mm

Accessories

MP Module plates	148 - 149
BPM Blank plates	159